

Streetscape Project 2011

Federal Boulevard
(23rd to 26th)

And

West 25th Avenue
(Eliot to Federal)

Federal
Boulevard Partnership

Process

- Partnership organizes streetscape committee
- Scope and streetscape definition
- Public process definition
- Public process:
 - Kick-off (February)
 - Half-day design workshop (April)
 - Conceptual design presentation (today!)
 - Final designs (August)

Definition developed for streetscape project

Interface between urban environment and human experience

Streetscape encompasses all elements (man-made and natural) that contribute to how we perceive public space within a transit corridor. Depending on speed of travel we notice and utilize different elements; whether transit happens by foot, bicycle or by a motorized vehicle the purpose, needs and perception change. A complete streetscape accommodates all modes of transportation as well as different types of activities and elements that happen within and outside the buildings including and adjacent to public right-of-way (landscape, commerce, entertainment, housing, etc).

Kick-off meeting

Issue Examples

- No identity or sense of place
- Not pleasant to walk
- Lack of uniform design
- Poor bus stops and shelters—no trash cans
- Poor conditions
- Not pedestrian friendly
- Crossing at 23rd and 26th difficult and unsafe
- Little formal landscape
- Disjointed uses, lack of parking

Opportunity Examples

- Name/brand the area
- Develop physical design, provide for additional landscape and furniture
- Enhance lighting – pedestrian scale
- Provide corner bump-outs, increase intersection safety
- Provide pedestrian buffers along Federal
- Upgrade medians
- Open businesses to street

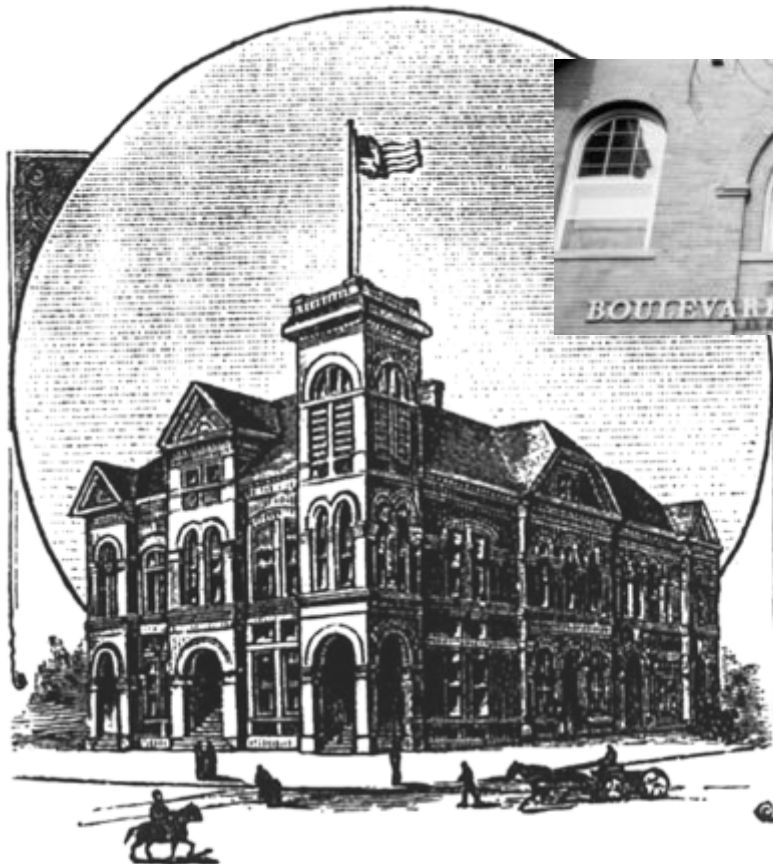
Public workshop – big idea

Initial outcomes of the process strongly suggest Boulevard transformation only occurs from changing purpose—from a primary purpose of moving vehicular traffic, to a focus on moving and better accommodating people. With that premise, the following principles were used in developing Streetscape design concepts.

- “Think big, dream big”
- Increase pedestrian safety, walkability, access and health
- Enrich landscapes
- Retain and embrace historic elements
- Add architectural elements (furniture, art, lighting, infrastructure, etc.)
- Encourage greater consistency in scale, look and feel
- Encourage mixed uses

10 district concepts

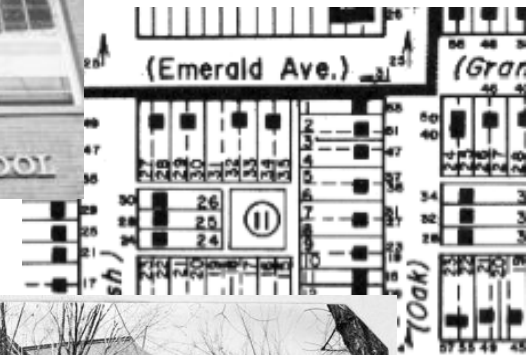
- Develop a brand and identity
- Enhance the brand and identity with artistic gateways and public art
- Develop a design standard for bus stops
- Develop a streetscape concept for west 25th
- Create a design element at 25th and Eliot to engage the neighborhood
- Redesign Federal to emphasize pedestrian and bicycle safety
- Redesign Federal medians to improve the pedestrian experience
- Redesign and provide enhanced landscaping along the pedestrian parkway of Federal with slopes to create a better sense of safety and comfort
- Introduce locations along the west side of the 2500 block of Federal to facilitate local business growth and mixed use
- Illustrate future potential building scale and business use opportunities



CITY HALL

Our Advantages:

12 THOUSAND population; excellent schools; well attended churches; no saloons; fine sewer system; good water works; fine system electric light; pure mountain air; no smelter smoke; 200 feet higher than Denver; excellent car service; only 1 1-2 miles to center of Denver.

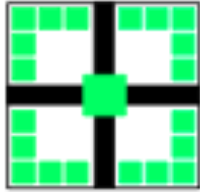


- Emerald Ave (W. 25th Ave)
- City Center for City of Highlands
- Square blocks with carriage lots

Design inspiration

Federal
Boulevard Partnership

Potential Logos



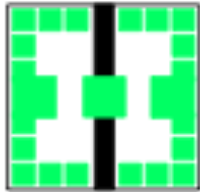
Highland Square Times



Highland Square Bookman Old Style



Highland Square Garamond



Highland Square Baskerville Semibold



Highland Square Papyrus

Logos

Federal
Boulevard Partnership